



**Future  
happens today**

# Business overview

Discover the power of Onwelo's innovative IT solutions, which have already grown many businesses worldwide.

Why will your company become a leader with us on board?

Because we will...

- ...give you specialized consulting services
- ...transfer your assets to the cloud
- ...implement integrated system solutions
- ...provide comprehensive managed IT services



# Geographical Expansion

Company offices & local presence

- **USA:** New York, **Germany:** Leipzig, **Switzerland:** Lucerne
- **Poland (7 biggest cities):** Warszawa, Kraków, Katowice, Kielce, Gdańsk, Lublin, Łódź

**Global delivery markets**

Denmark, Norway, Sweden, Germany, Austria, Luxembourg, Switzerland, Netherlands, Belgium, France, Great Britain, Poland, USA, Canada, Middle East and others

# Diversified base of global clients

avalog

SIGNAL IDUNA 

BROWN  
BROTHERS  
HARRIMAN

 **cytiva**

**Amica**



MediaMarkt SATURN

 **BACKBASE**



aion  
bank



**dyson**

• **APTIV** •



| **VODENO**

 **UNIQA**

**ING** 

 **GEDEON RICHTER**

 **Hitachi Energy**



**TESCO**

**Google**

 **AEGON**



 **ADAMED**



**NOVOL**

ringier  
axel springer



 **NNLife**

COMMERZ FINANZ 



 **mondi**

 **Interparking**

**CANAL+**



**150+**

Customers  
worldwide



**300+**

Implemented  
projects



**60**

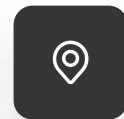
Master Service  
Agreements



**20**

Delivery  
markets

# Onwelo in numbers



**10**

Offices (Europe  
& the US)



**700+**

Employees



# With Onwelo, you will...



Digitize and modernize with our cloud transformation services



Cut costs with our tech-driven operational enhancements



Gain insights from our seasoned industry experts



Quickly adapt to new directions with our diverse service offerings



Benefit from the collaborative power of our expert know-how



Enhance the key processes in your business

# We are the top technology partners for our blue chip customers by:

Cutting-edge technology  
& Expertise



Providing the cutting edge technology products, including AI, and adjusting them to meet the most unique demands of our customers



Answering business needs of our customers by providing tailor made solutions from the idea to the final result

# Services areas

## Delivery Divisions

Software Development • Cloud Transformation Services • Mobile Solutions • Cloud Managed Services

Cyber Security • Test Factory Center • Intelligent Automation • Data & Analytics • Financial Solutions



**Business expertise**



**Idea validation**



**Proof of Concept**



**Technology enablement proficiency**



**Feasibility study (MVP)**



**Development plan**



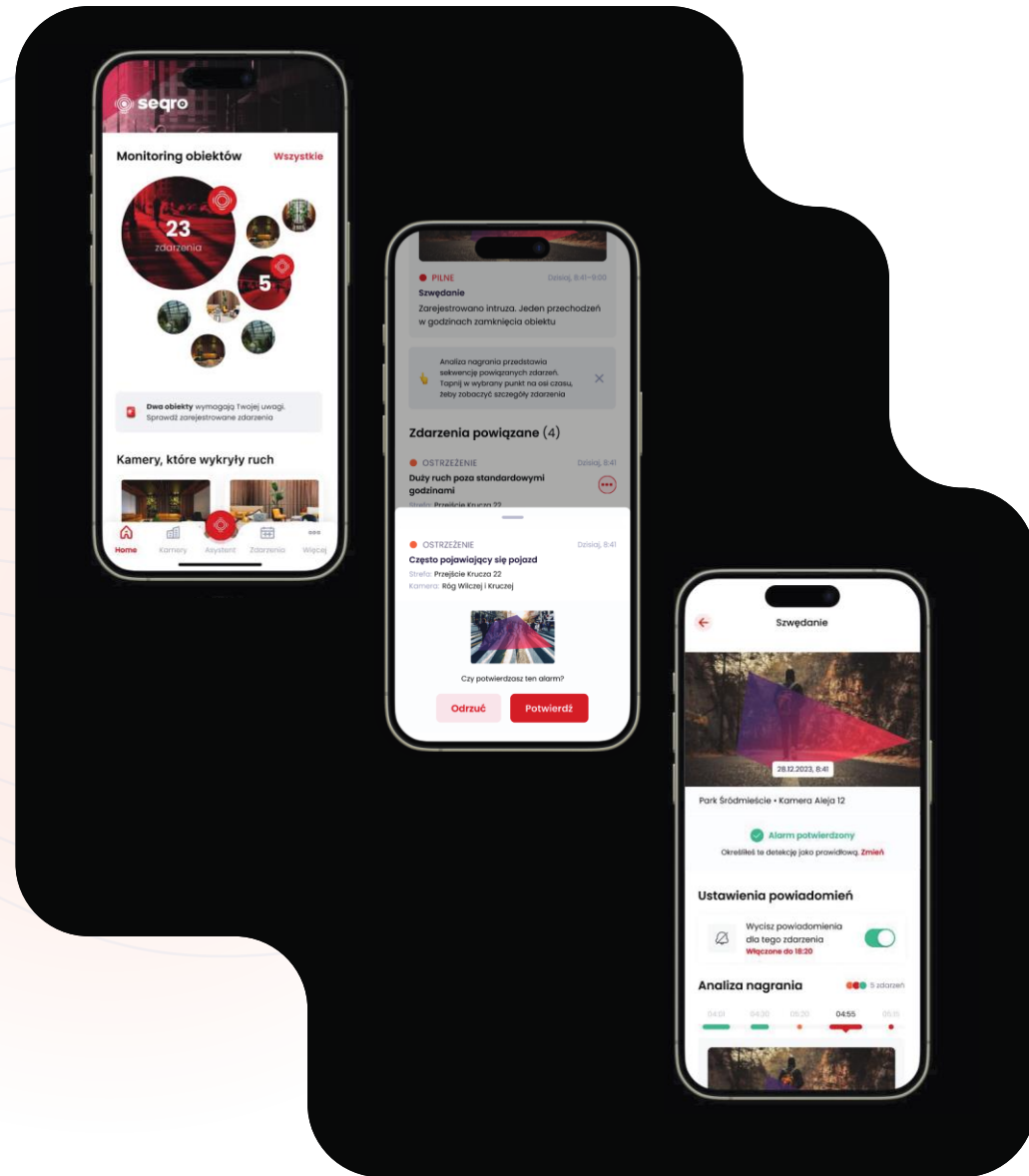
# SEQRO

Innovative cloud-based AI platform for monitoring system management

Imagine a 24-hour guard monitoring nonstop and reacting to threats the human eye cannot see.

Seqro is an intelligent, AI-driven application that integrates with CCTV systems. It analyzes video streams to detect and prevent unwanted situations.

Through continuous learning, Seqro identifies visitors, detects anomalies, and triggers alarms, ensuring top-notch security and does it better and better every day.



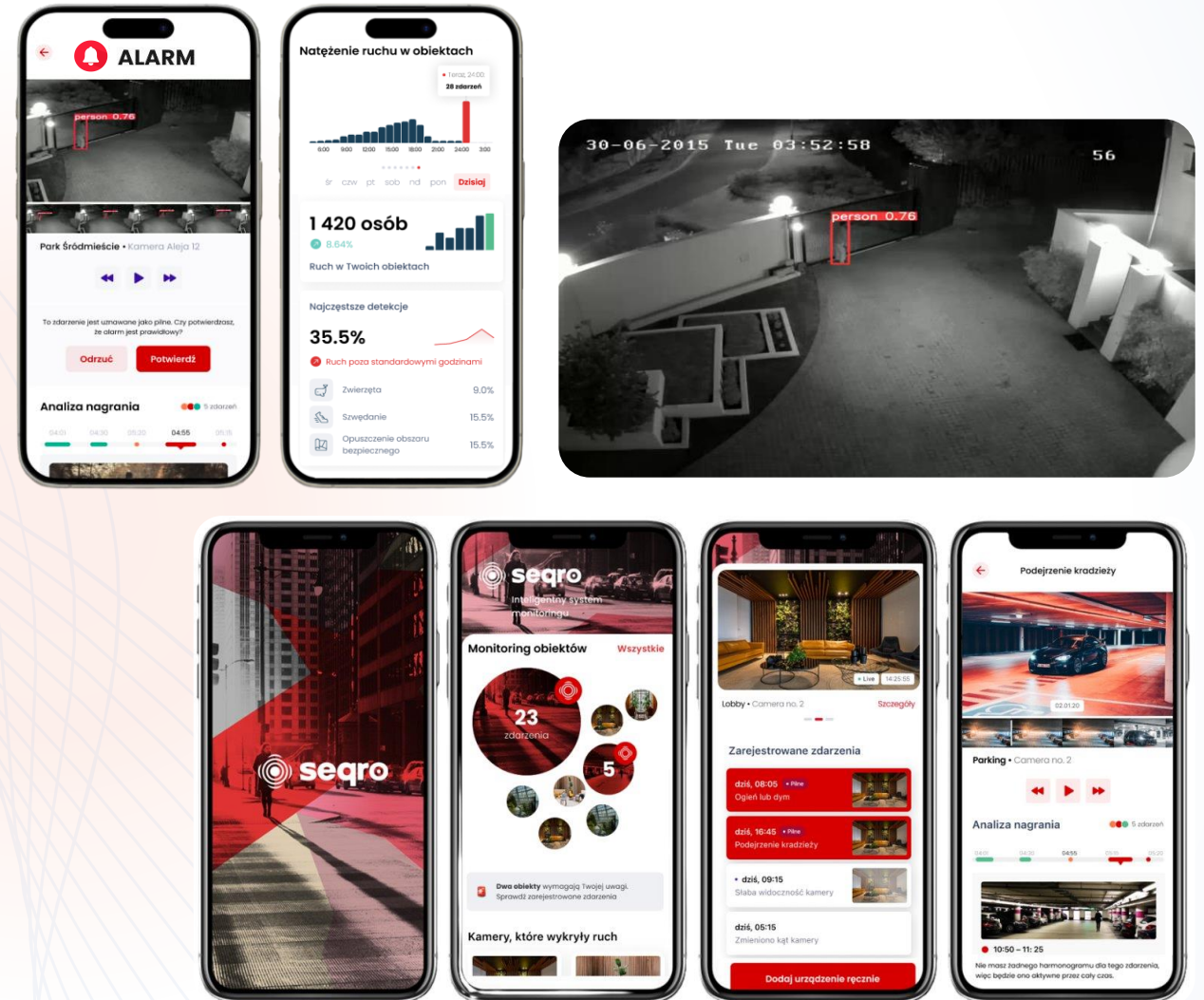
# Intelligent monitoring system

## How Seqro works

The heart of our app is a next-generation intelligent monitoring system based on our advanced in-house analytical platform.

It covers either standard events or complex sets of unusual behaviors.

It can still be operated by a human, who can confirm or reject detection – and teach the app.



# Use examples



## Smart city

- Accident spotting
- Detection of law violations
- Car parking management
- Intelligent traffic light management



## Safety and security

- Virtual lifeguard on swimming pool
- Guns and dangerous tools detection
- Vandalism, intrusion and aggressive behavior



## Construction supervision

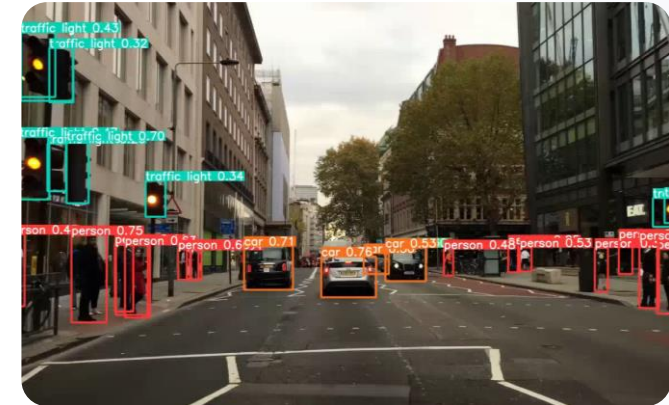
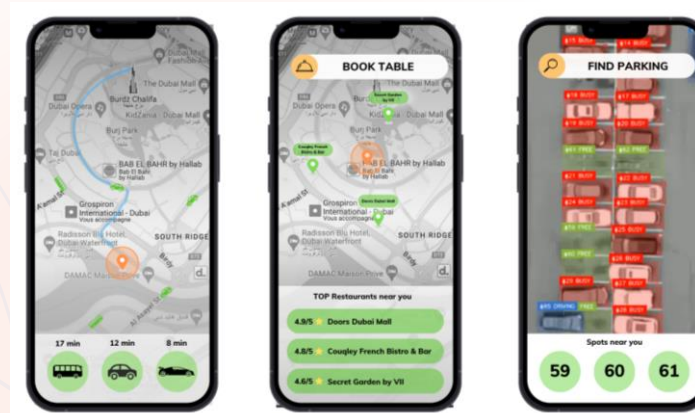
- Completeness of protective clothing
- Access control
- Accident detection

# How we create smart cities?

## What Seqro does

Advanced AI-driven systems continuously monitor the city, detecting accidents and law violations. It also optimizes traffic flow through intelligent traffic light management based on real-time camera feeds.

Additionally, smart parking management directs vehicles to available spots, reducing congestion and improving the overall urban experience.



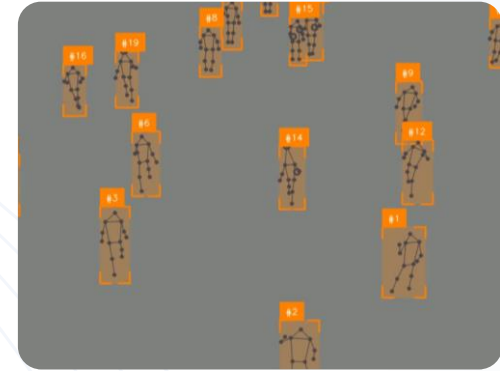
# We provide safety and security

## How Seqro helps maintain security

Seqro enhances safety by leveraging smart sensors and real-time monitoring to detect and respond to various threats.

The application acts as a virtual watchman, identifying dangerous incidents while also alerting authorities to the presence of dangerous weapons and aggressive behaviors in public spaces.

By providing instant notifications upon detecting these hazardous situations, Seqro enables swift intervention, creating a safer environment for communities.



# Construction supervision

## How Seqro can help in employees safety

The application ensures employee safety by continuously checking for compliance with protective clothing requirements and detecting unauthorized access to the site.

It also automatically identifies dangerous practices and employee accidents, enabling prompt intervention and maintaining a secure construction environment.



# Integration of AI Behavior Recognition System with SIEM

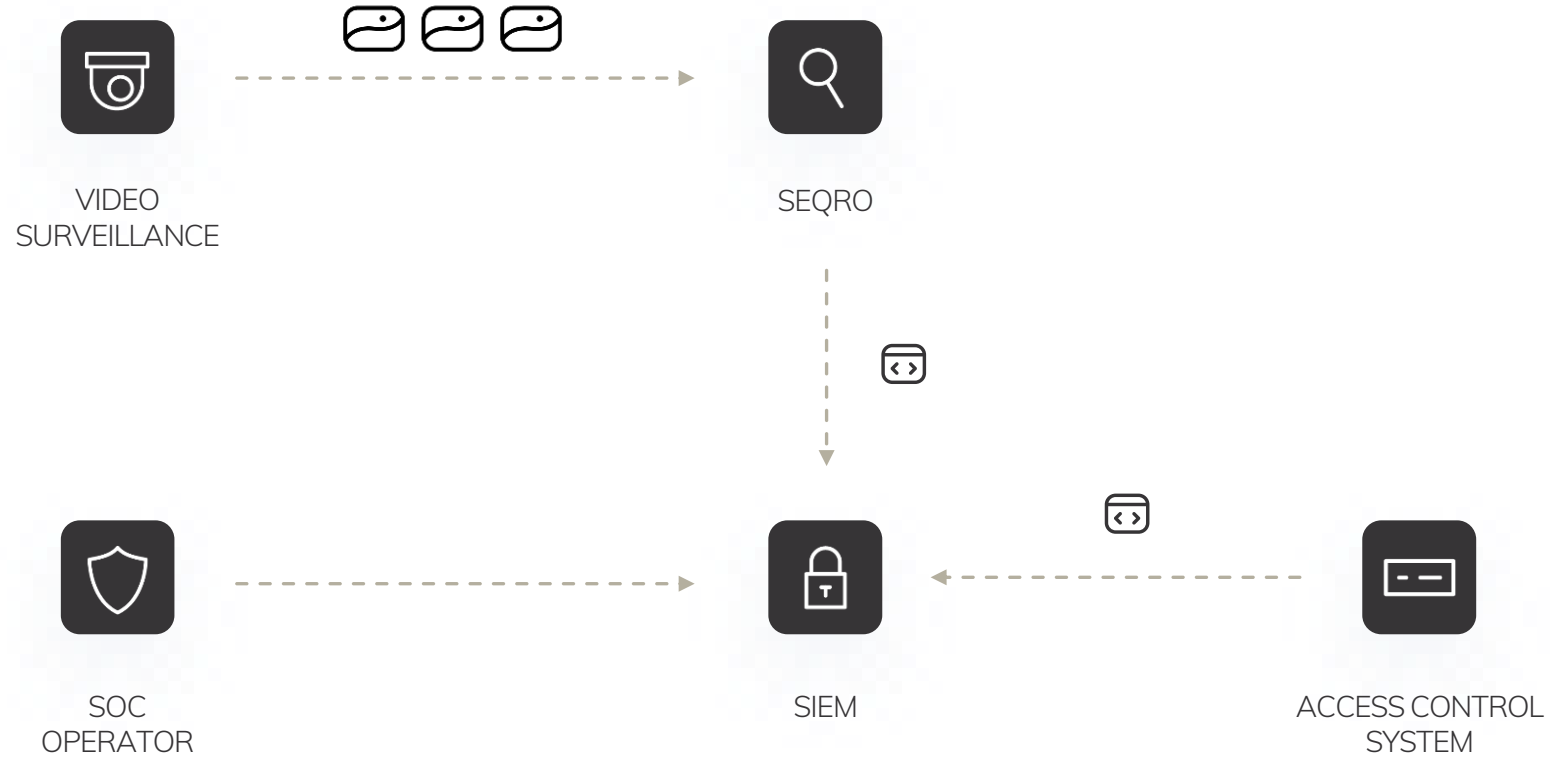
## Integration with SIEM Systems

The system can integrate with SIEM systems, allowing us to gather data and sources from various security systems, such as:

AI Behavior Recognition System • Access Control Systems • Alarm Systems • Intrusion Detection Systems

## Benefits of Integration

Integration enables advanced correlation and analysis of events from different security systems. This allows the organization to better respond to threats, providing more comprehensive and effective security management.



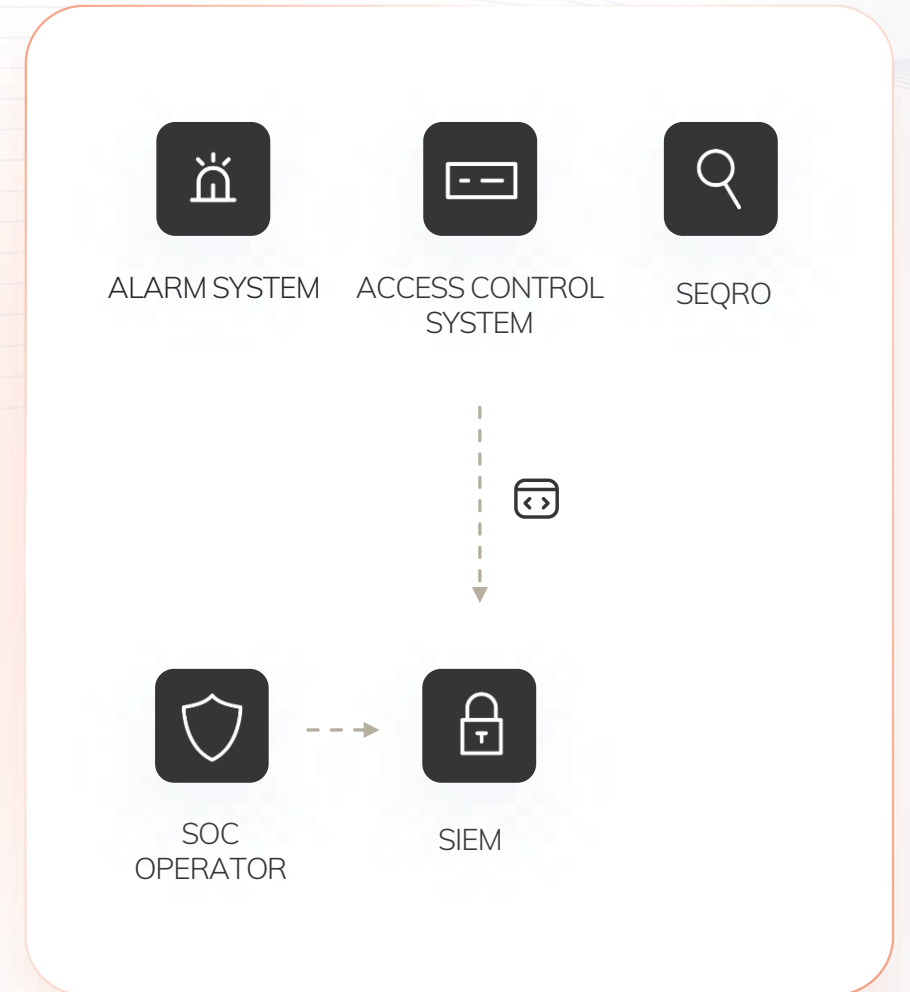
# Correlation and Handling of Physical Security Incidents

## BENEFITS OF LOG COLLECTION FROM VARIOUS SYSTEMS

Enhanced Data Correlation • Creation of Correlation Rules • Immediate Response

## IMPACT ON SECURITY OPERATIONS

Intuitive Data Visualization • Proactive Thread Management



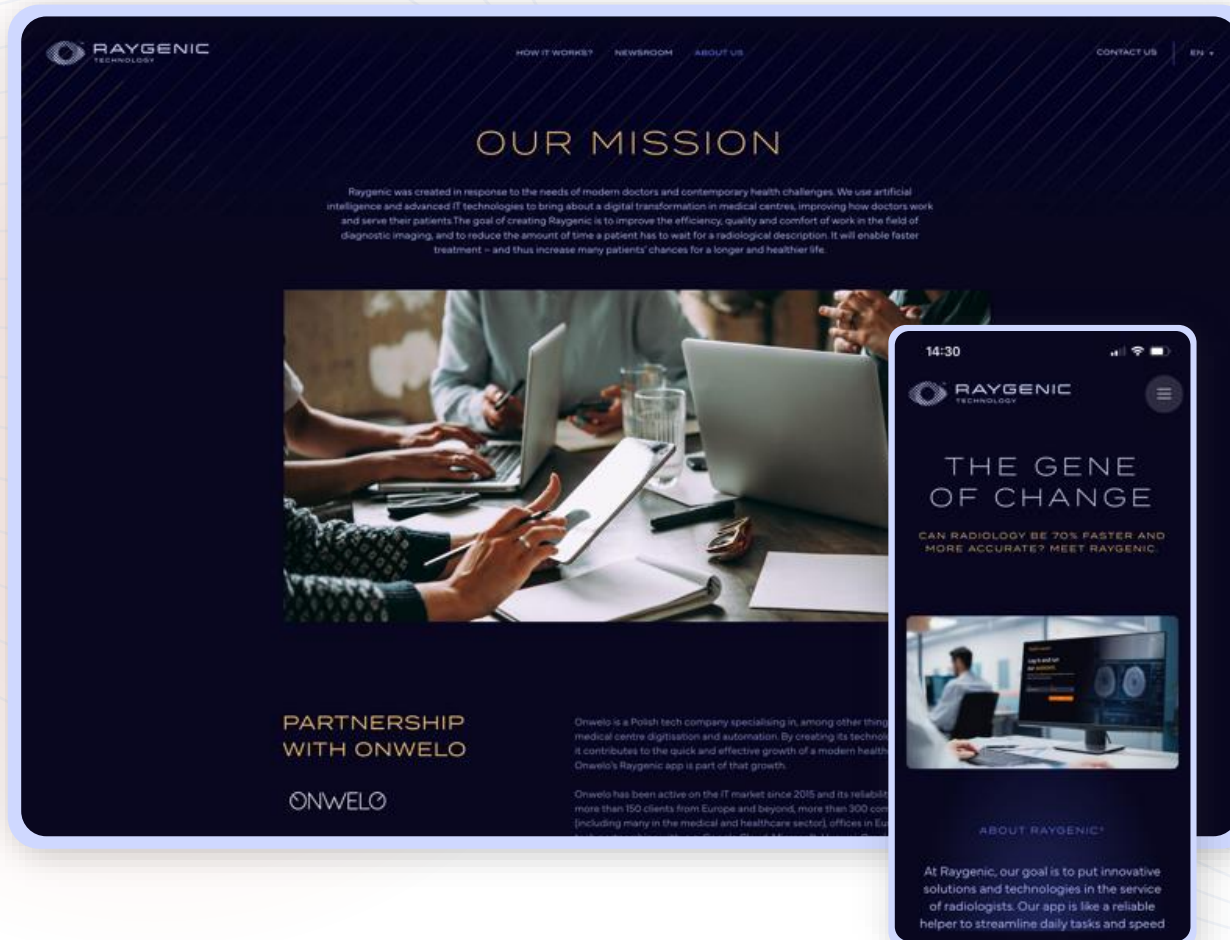
# RAYGENIC

## AI-driven solution for radiologists

Imagine a world where cancer detection is swift and precise.

Our intelligent, AI-driven radiology application transforms this vision into reality. It is revolutionizing advanced cancer recognition and diagnosis.

But it's not just software; it's a powerful ally in the fight against cancer, empowering radiologists to save more lives.





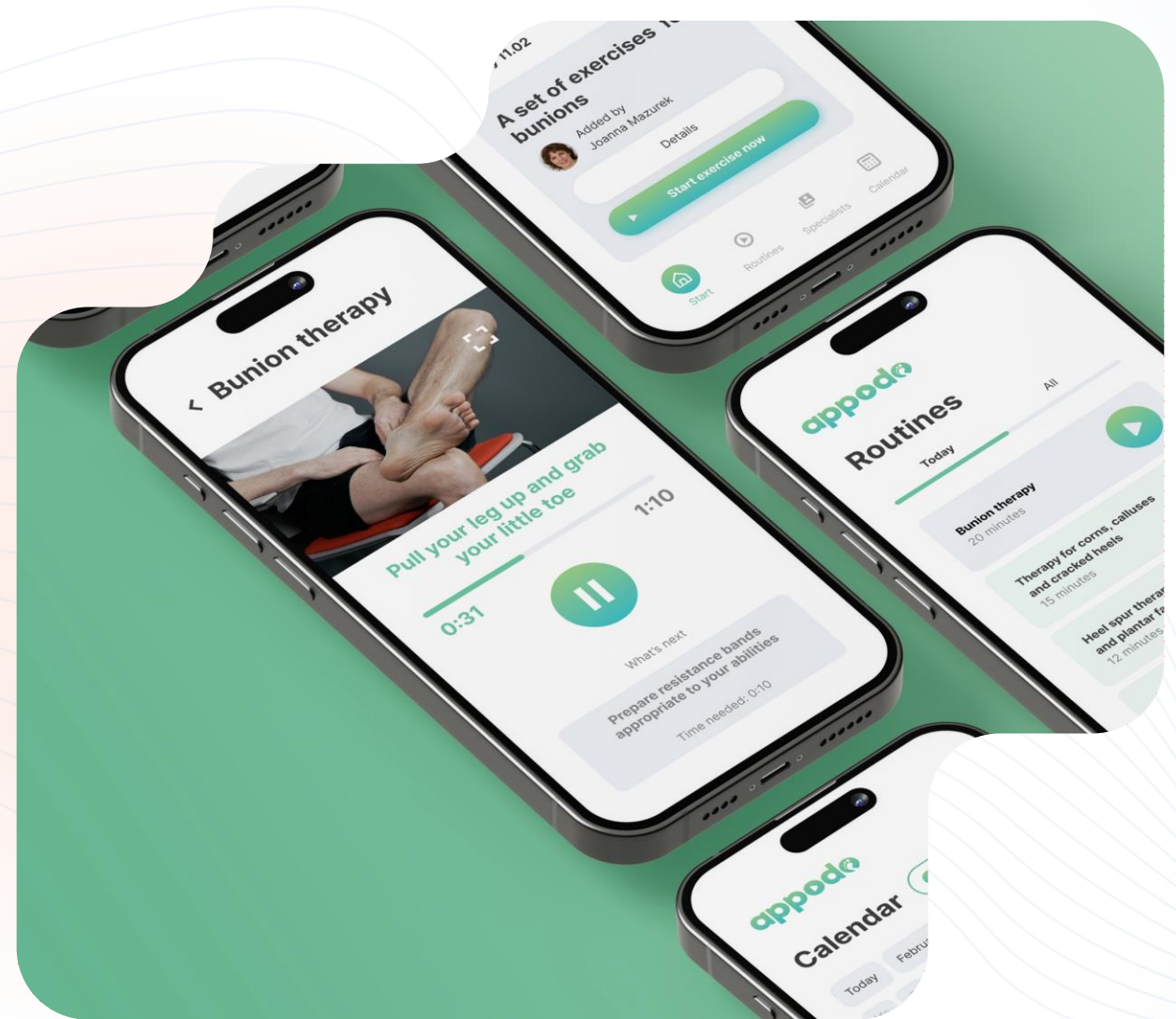
# APPODO

An application for podiatrists that effectively supports therapy

Imagine being a doctor who can track your patient's progress with a single touch of the screen.

Appodo is a digital assistant that speeds up podiatric therapy, saves time for the patient and doctor, and enables better communication between them.

With Appodo, the road to full recovery becomes shorter and more efficient.



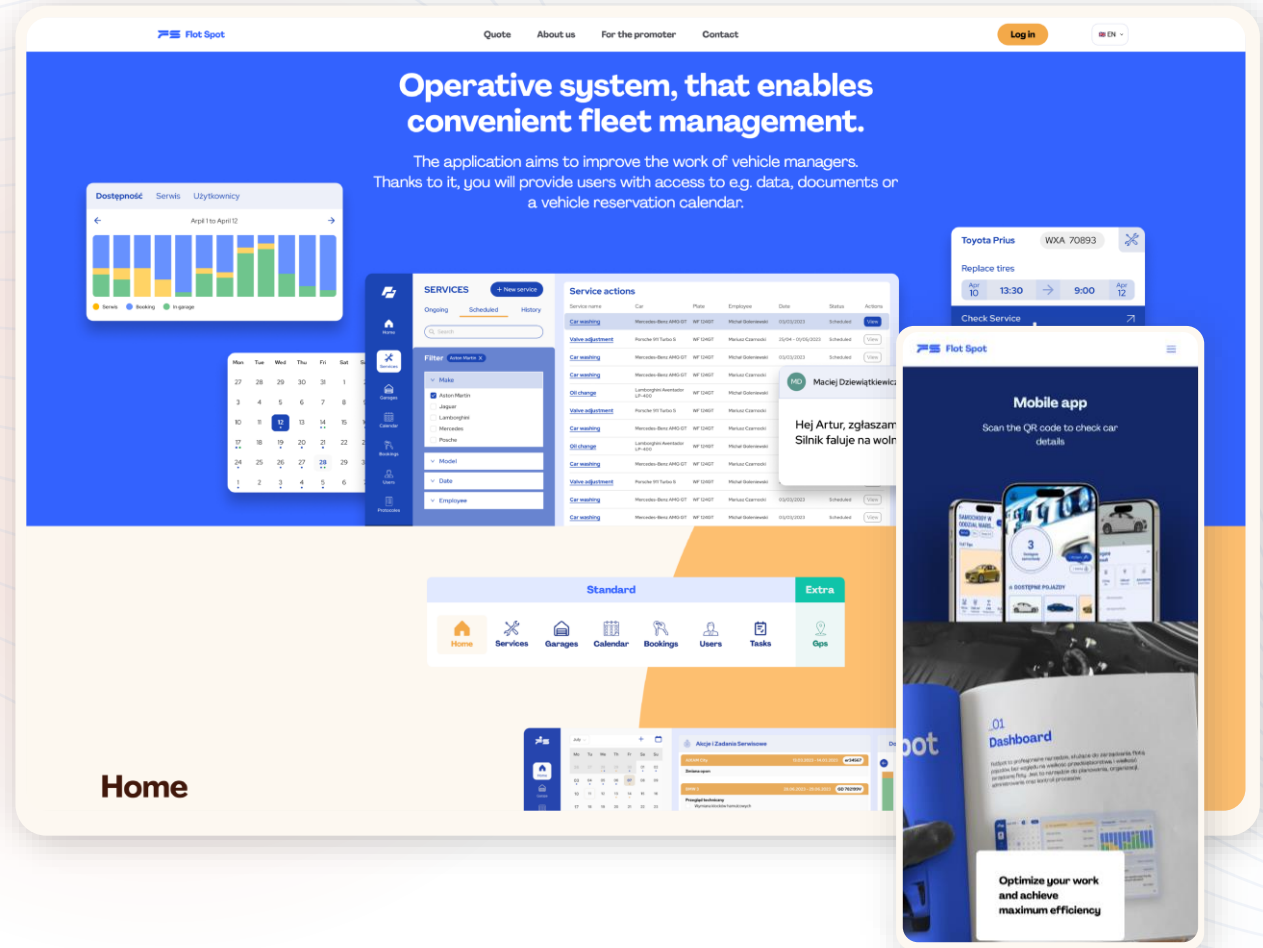
# FLOT SPOT

A professional tool for managing a vehicle fleet

The owner of a fleet of vehicles must manage them like a conductor manages an orchestra.

Flot Spot is an application that tracks each vehicle, optimizes costs, organizes services and reservations, and keeps all documents at your fingertips.

With Flot Spot, cars become an orchestra, and you become its master conductor, saving valuable time and resources.



# Why Onwelo?

- **Unlocking your full potential:** We merge the knowledge from diverse fields to meet your needs
- **Mastering complexity:** No project is too complex for us – we enjoy difficult challenges
- **Global experience:** We have international experience and cultural understanding, and the ability to finely tune our services to them
- **Elite partnership:** Our alliances with tech giants like Microsoft Azure, Google Cloud Platform, and Amazon Web Services amplify your success
- **Adaptable collaboration:** Our flexible partnership approach is designed to align perfectly with your specific requirements
- **Blue chips specialists:** We specialize in serving large companies located in Western Europe and the US





# Get in Touch!

## Contact us



Name

**Dariusz Ossowski, CEO**



Phone

**+1 (646) 906-5548**

**+48 728 438 381**



Email

**dariusz.ossowski@onwelo.com**



[www.onwelo.com](http://www.onwelo.com)

[contact@onwelo.com](mailto:contact@onwelo.com)



HEADQUARTER Address

**ul. Prosta 67**

**00-838 Warszawa**

**warszawa@onwelo.com**



NEW YORK Address

**85 Broad Street**

**NY 10004**

**nyc@onwelo.com**